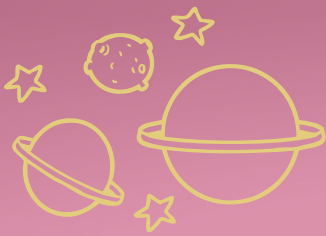


Your Spiritual Year



Key Anniversaries

Important things which happened in your life to guide you to this path



Universal Events

Key points in the movement of the spheres, like equinoxes or eclipses



Gatherings

Events which bring your spiritual circle together to observe as a community

Spiritual New Year

What is the most personally significant transition event in your cycle?



Cultural Events

Holidays and festivals which are part of the cultures related to your spirituality



Times of Dedication

Dates when it makes sense to fast, to rest, to do certain significant rituals

